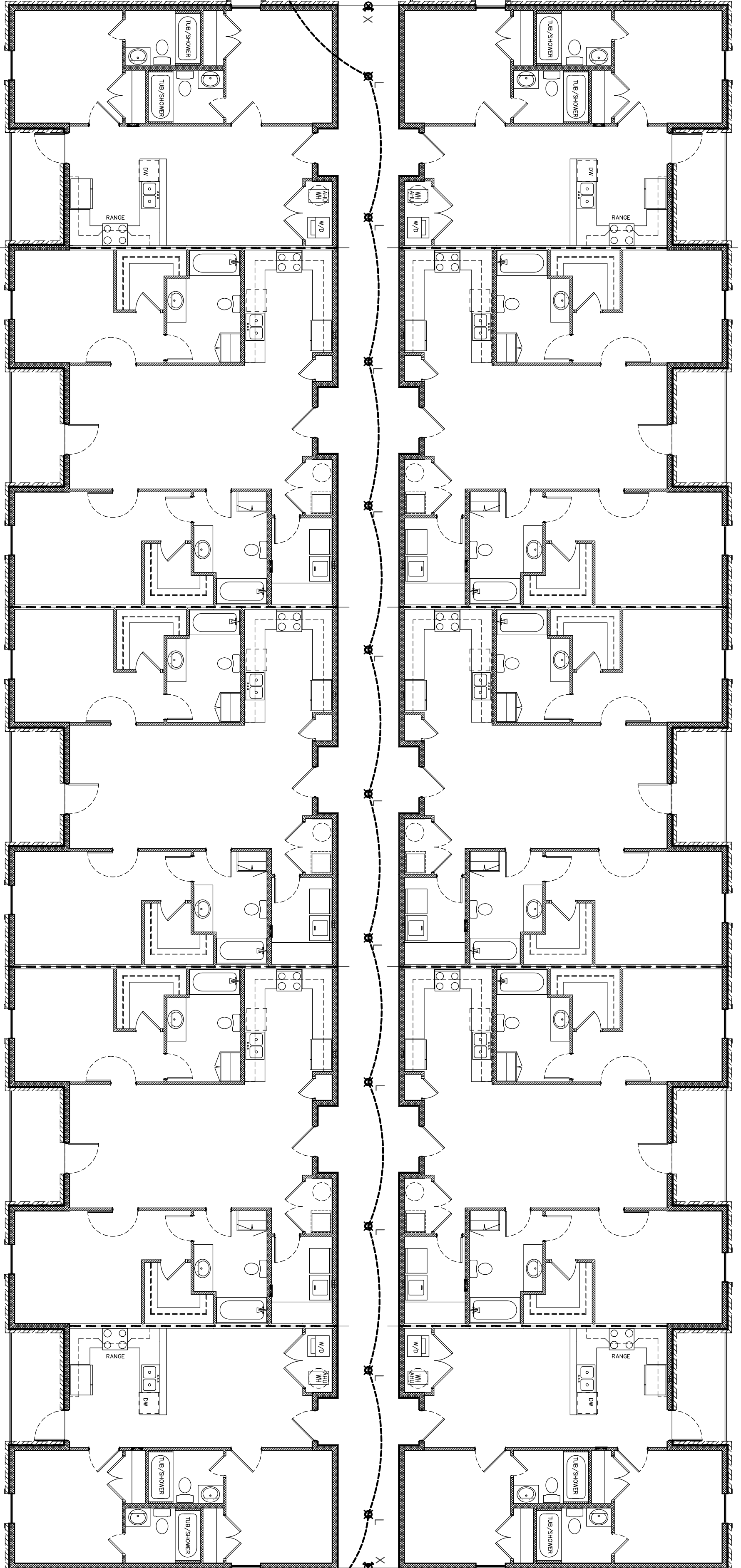
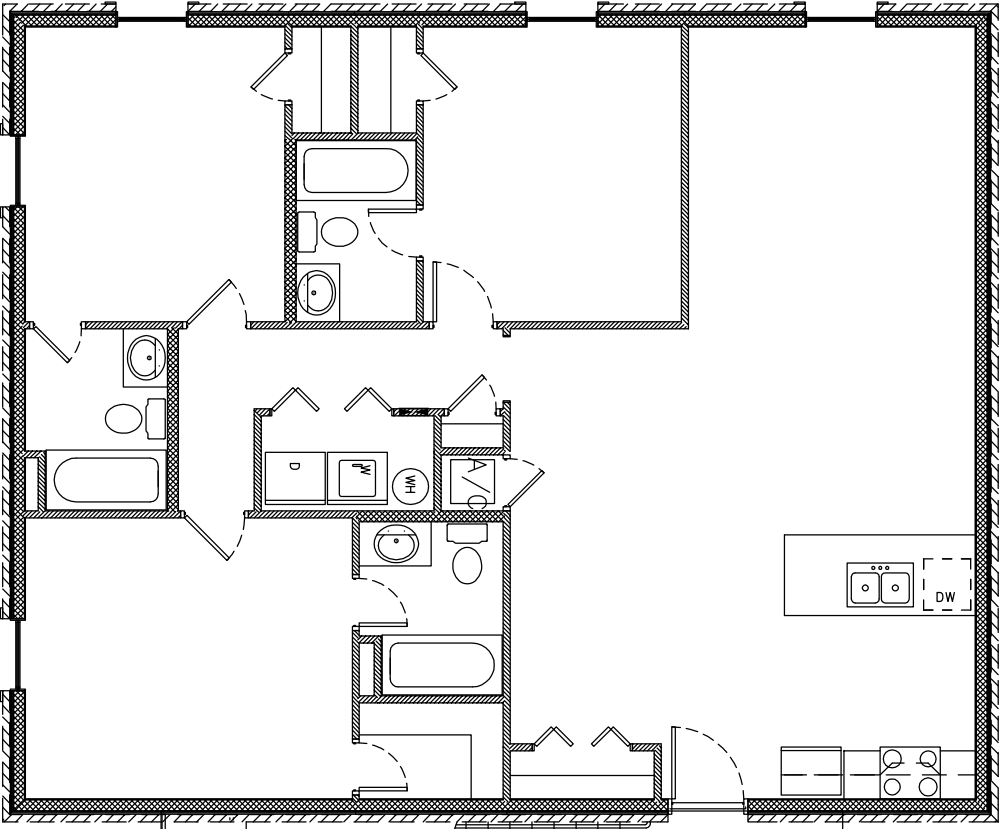


Electrical Plan - Building "B" 2nd, & 3rd Floor
Scale: 1/8" = 1'-0"



Electrical Plan - Building "B" 1st Floor
Scale: 1/8" = 1'-0"

ELECTRICAL LEGEND

● WP	WEATHER PROOF DUPLEX OUTLET AT 18" AFF
● GFH	DUPLEX OUTLET W/GROUND FAULT INTERRUPT
EP	ELECTRICAL PANEL

LIGHT FIXTURE SCHEDULE

SYMBOL	NO.	TYPE	MANUFACTURER	REMARKS
⊠	L	CAN LIGHT	COOPER 301P	
⊠	X	EMERGENCY W/ EXIT COMBO	EATON LIGHTING SUR-LITES AP7 0-R WH-120/277V DH	UNIVERSAL MOUNTED W/LED EXIT LAMPS WITH BATTERY B.V.

DRAWING NUMBER	E-2.3
SHEET 41 OF 47	

A New Apartment Complex
For
Remerton Mill Apartments
1853 W. Gordon Street
Remerton, Georgia

JAMES D. CONE
ARCHITECT
1806 PLUM STREET VALDOSTA, GA. 31601 TELE (229) 247-8378 FAX (229) 245-9311 E-mail JIMMY_CMA@BELLSOUTH.NET

