

### H.V.A.C. NOTES

#### HVAC UNITS

1. HEATING AND AIR-CONDITIONING UNITS AND CONDENSING UNITS AS INDICATED ON SCHEDULE W/ PROGRAMMABLE THERMOSTATS.
2. PROVIDE METAL DRAIN PANS WITH AUX. DRAINS RUN TO OUTSIDE OF BUILDING FOR EACH AIR HANDLER.

#### INSULATION

1. ALL TRUNK LINES ARE TO BE GALV. STEEL W/ 1 1/2" OF FIBERGLAS DUCT WRAP. ALL JOINTS TO BE STAPLED. TAPE ALL JOINTS ON INSIDE AND OUTSIDE OF INSULATION.
2. INSULATE ALL SUPPLY DUCT WITHIN THREE FEET OF AIR HANDLER W/ 1/2" R3 DENSICOR UNDER LINESHIELD OR EQUIV. ON METAL AND FASTENED W/ STAPLES OR OTHER MEANS TO INSULATION. INSULATE ALL RETURN AIR DUCT IS TO HAVE SAME INSULATION.
3. ALL BRANCH DUCTS LESS THAN 10'-0" ARE TO BE FLEX.

#### REGISTERS & GRILLS

1. SUPPLY REGISTERS ARE TO BE HART & COOLEY SIZE AS INDICATED.
2. ALL RETURN AIR GRILLS ARE TO BE HART & COOLEY FILTER GRILLES, SIZE AS INDICATED.

#### FRESH AIR

1. ALL FRESH AIR REQUIREMENTS ARE TO MEET I.M.C. 2007-TABLE 403.3.

#### GENERAL

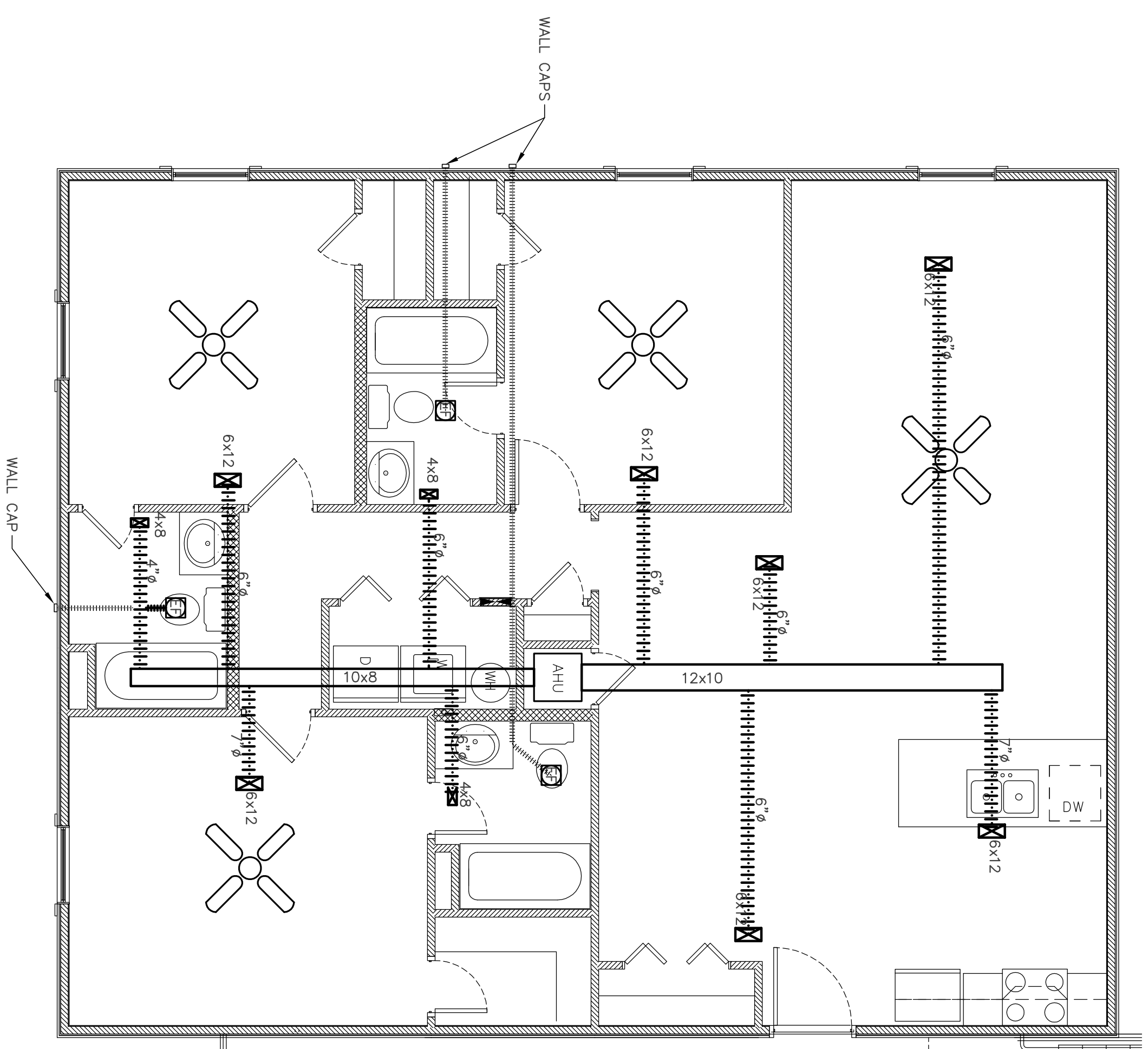
1. ALL INFORMATION ON H.V.A.C. PLAN IS BASED ON BEST INFORMATION AVAILABLE AT THE TIME OF DESIGN. THE CONTRACTOR SHALL BE THE SOLE RESPONSIBILITY FOR THE H.V.A.C. CONTRACTOR.
2. ALL HEATING AND AIR-CONDITIONING EQUIP IS TO BE AS SPECIFIED OR EQUAL. VERIFY WITH GEN. CONTRACTOR, OWNER OR ARCHITECT.
3. H.V.A.C. CONTRACTOR IS TO COORDINATE ELECTRICAL REQUIREMENTS WITH ELECTRICAL AND GEN. CONTRACTOR.
4. H.V.A.C. CONTRACTOR IS TO PROVIDE THE ARCHITECT WITH SPEC. SHEETS ON ALL HEATING AND AIR-CONDITIONING EQUIPMENT AND FIRE DAMPERS.

### H.V.A.C. EQUIPMENT

3 BEDROOM UNIT:  
 14 SEER 2 TON 8.3 HSPF  
 GSZ130241A GOODMAN HT PUMP  
 AWAF30316A AIR HANDLER W/ 5 KW  
 THZ210 FROG H.P. 153A1.  
 EF: #S110U BROAN 110 CFM EXH FAN  
 W/ R04 RADIAATION DAMPER HOUSING

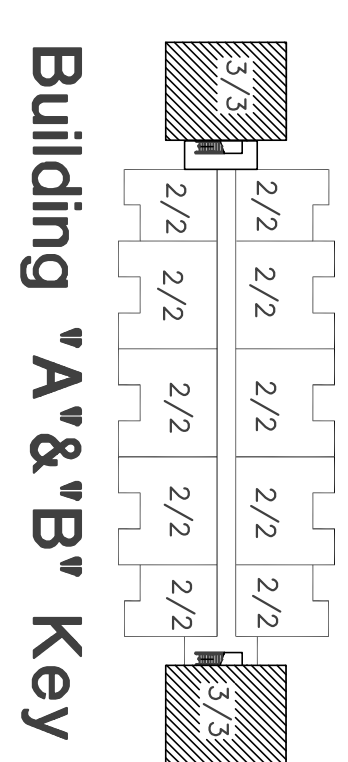
#### NOTE:

ALL DUCT & GRILLE SIZES ARE TO BE DETERMINED BY H.V.A.C. CONTRACTOR BEFORE CONSTRUCTION.  
 1st & 2nd PROVIDE FIRE DAMPERS AT EACH SUPPLY GRILL



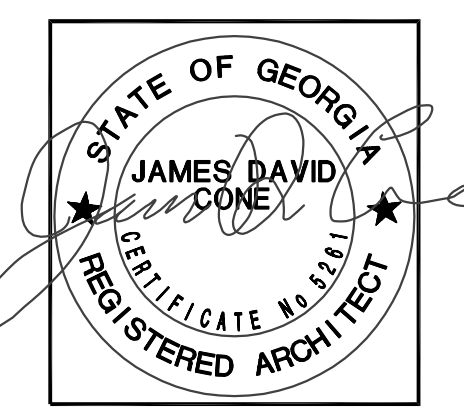
**HVAC Plan**  
**Typical 3-Bedroom Unit - Bldg. "A" - 2nd & 3rd Floors**  
**Typical 3-Bedroom Unit - Bldg. "B" - 1st, 2nd & 3rd Floors**  
 Scale: 1/4" = 1'-0"

OPPOSITE APARTMENT SIMILAR  
 EXCEPT REVERSE HAND



**A New Apartment Complex**  
 For  
**Remerton Mill Apartments**  
 1853 W. Gordon Street  
 Remerton, Georgia

**JAMES D. CONE**  
**ARCHITECT**  
 1806 PLUM STREET VALDOSTA, GA. 31601 TELE (229) 247-8378 FAX (229) 245-9311 E-mail JIMMY\_CMA@BELLSOUTH.NET



DRAWN \_\_\_\_\_  
 CHECKED \_\_\_\_\_  
 JOB NUMBER 17-09  
 DATE June 8, 2018  
 REVISIONS \_\_\_\_\_  
 THESE DRAWINGS ARE THE PROPERTY OF JAMES D. CONE ARCHITECT. PERMISSION AND CREDIT REQUIRED FOR REPRODUCTION.

**DRAWING NUMBER**  
**M-1.1**  
**SHEET 20 OF 47**